

Toward Better Lives and Stronger, Healthier Communities

A presentation by Jim McClelland

November 2018

Executive Director for Drug Prevention, Treatment and Enforcement, State of Indiana



Public Sector

EDUCATION

SOCIAL
SERVICES

CRIMINAL
JUSTICE

WORKFORCE
DEVELOPMENT

HOUSING

Education

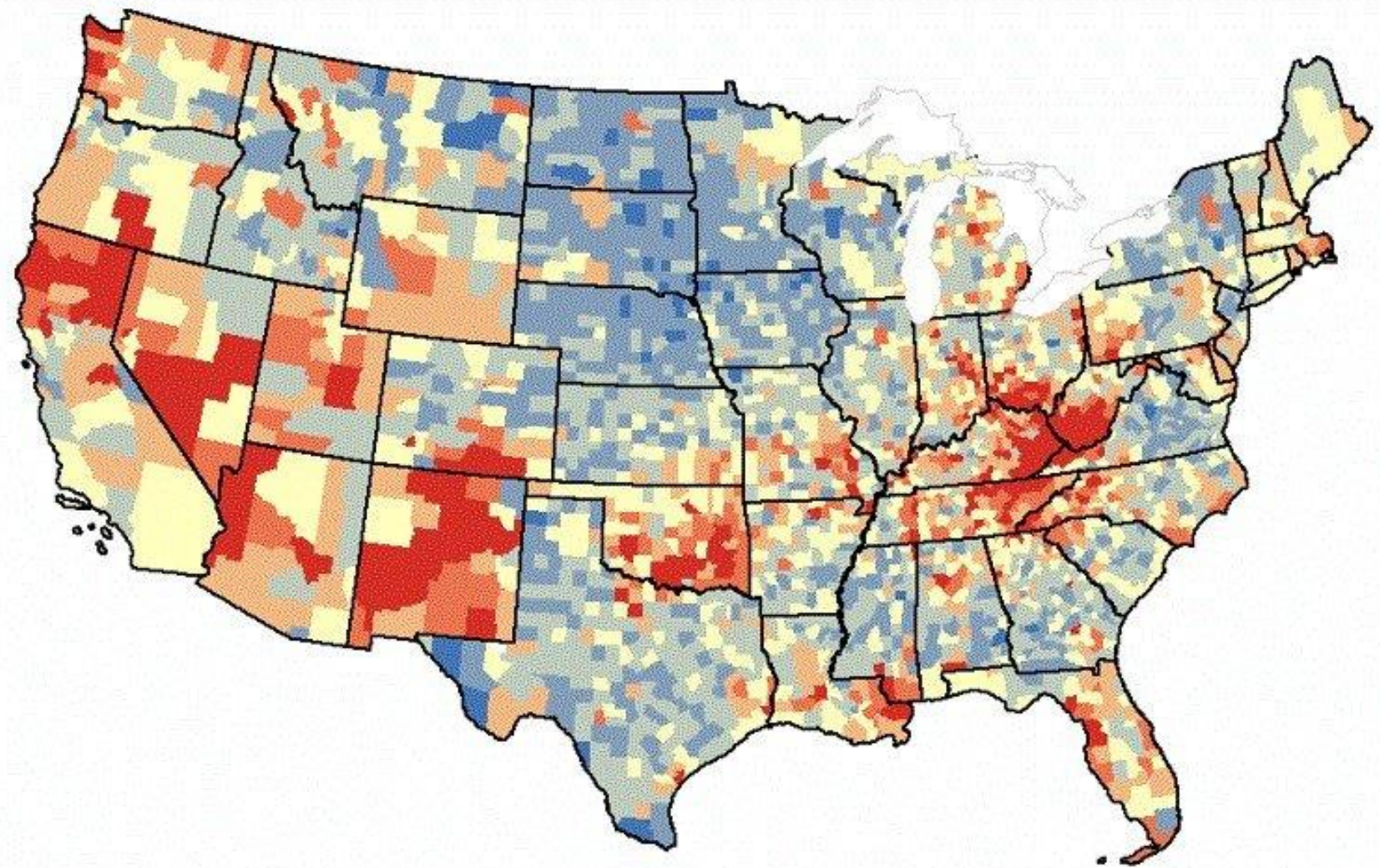
Social
Services

Criminal
Justice

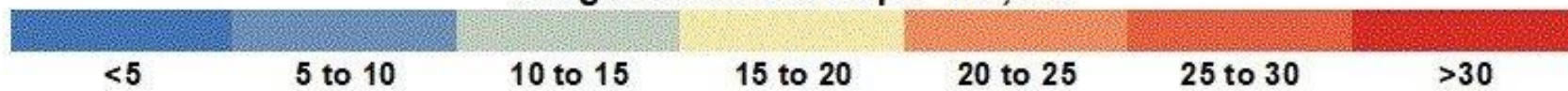
Workforce
Development

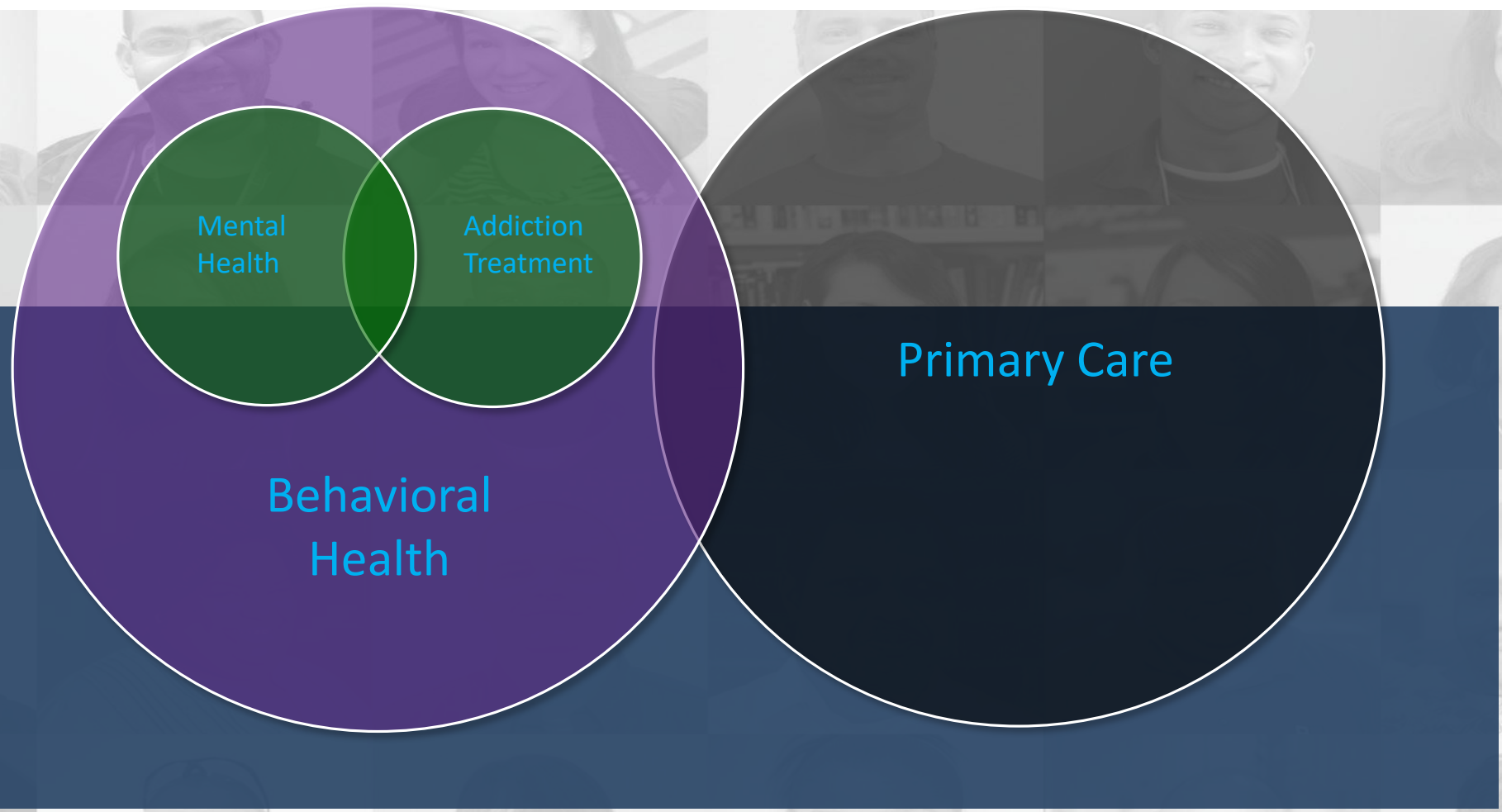
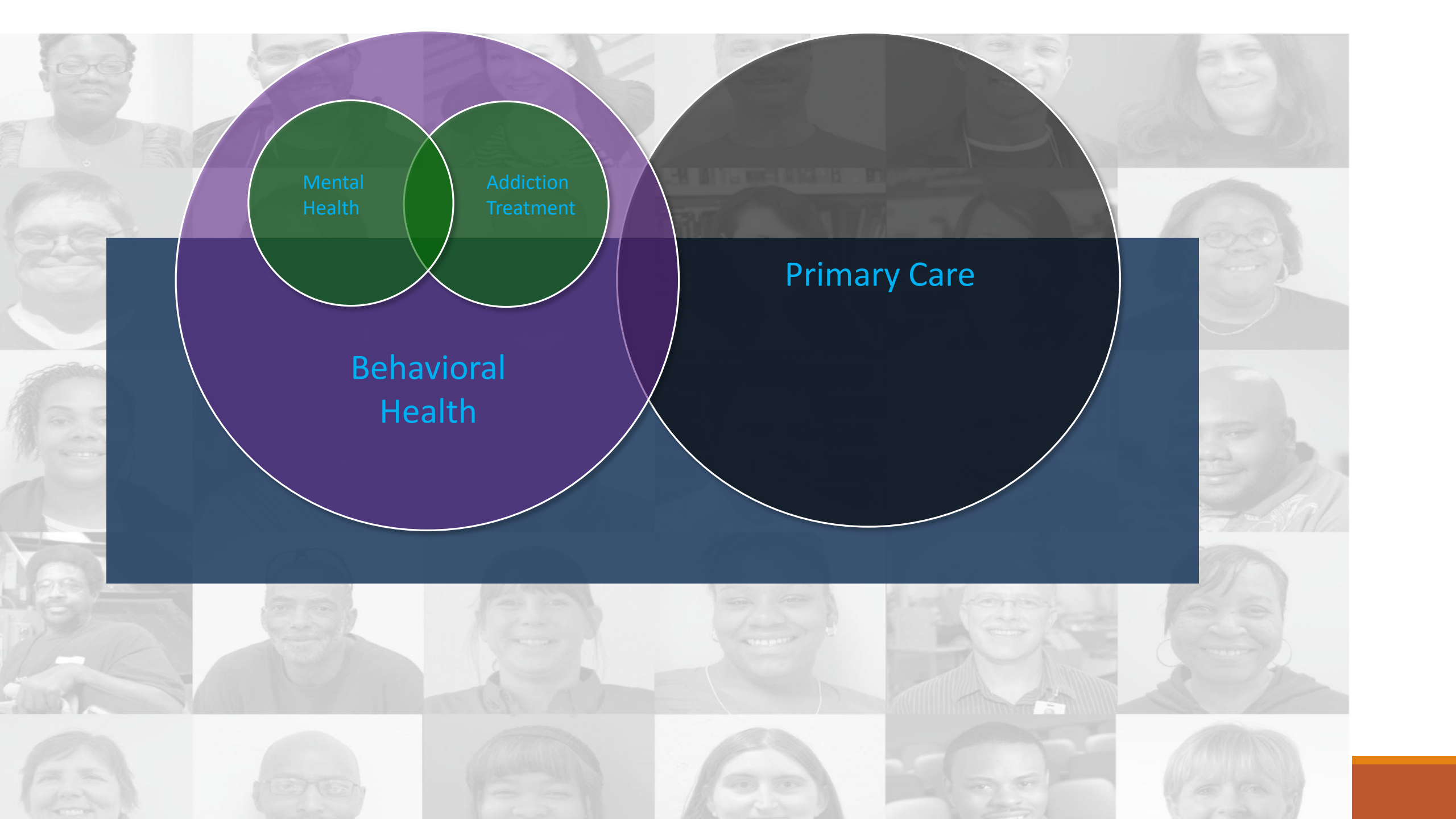
Housing

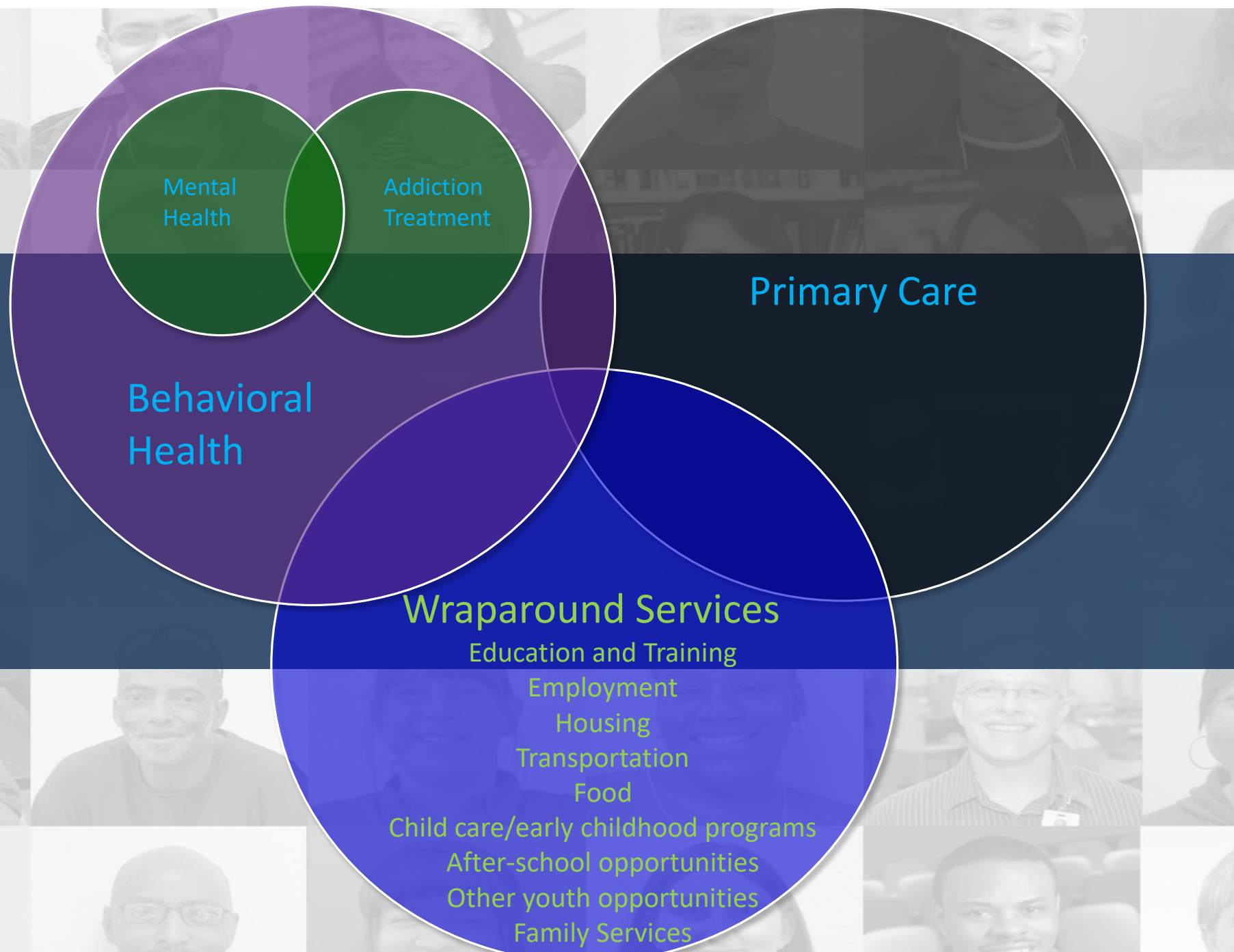
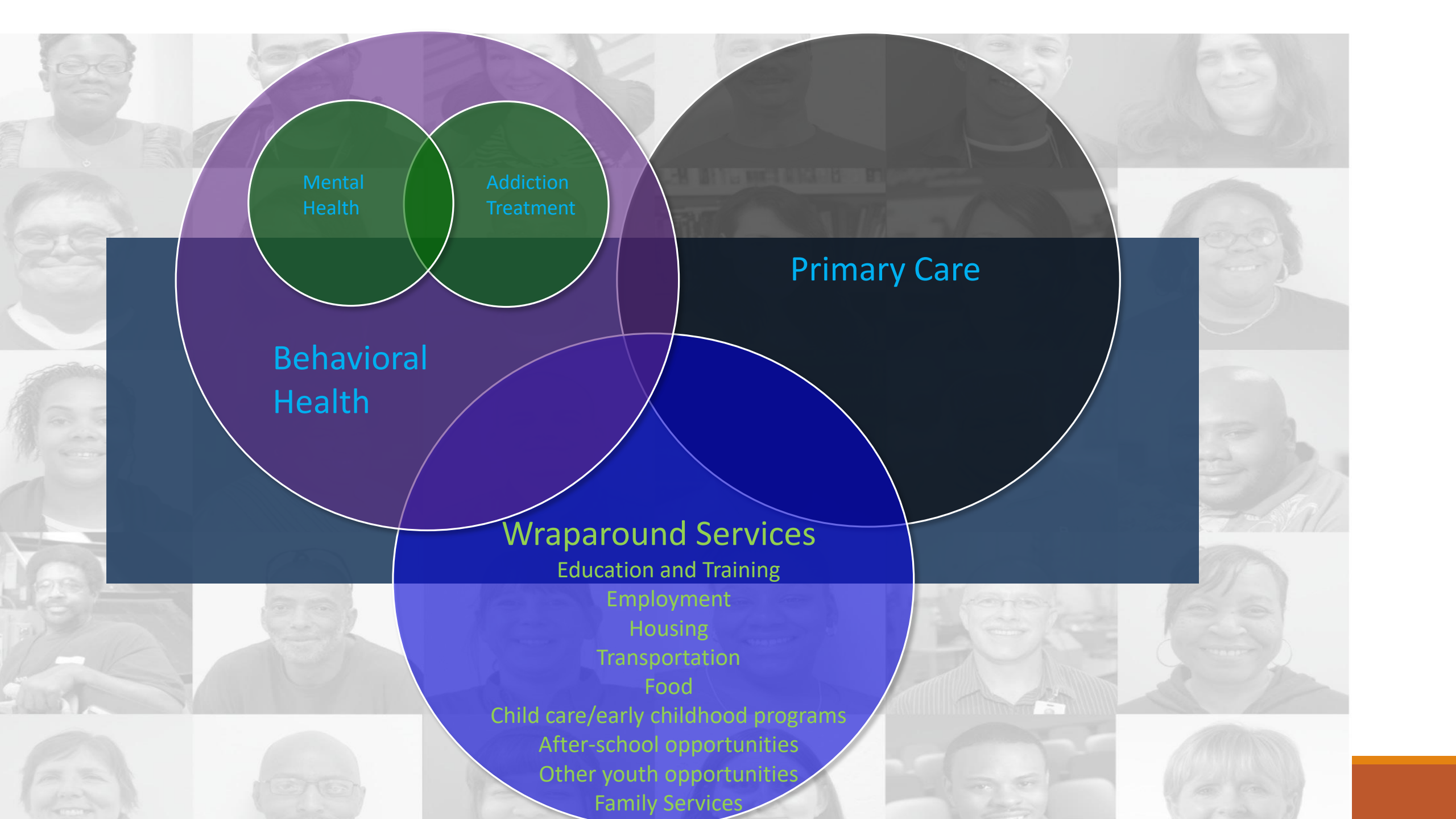
Not-for-profit Sector



Drug-Related Deaths per 100,000







Local Coalitions

Cross Sector

Public, Private, Not-for-Profit

Businesses, Educational Institutions, Health Care Entities

Local Governments, Law Enforcement Agencies, Courts

Philanthropies, Community-based Organizations, Faith-based Organizations

With strong local leadership



