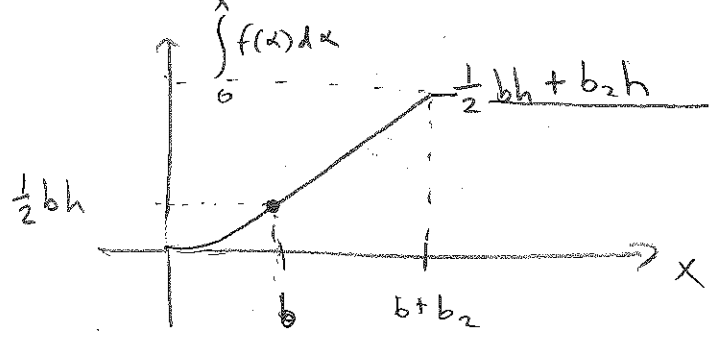
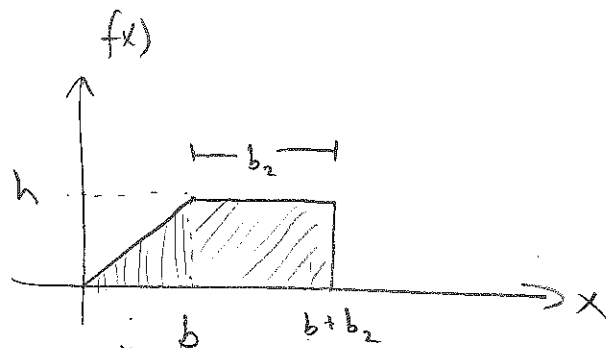
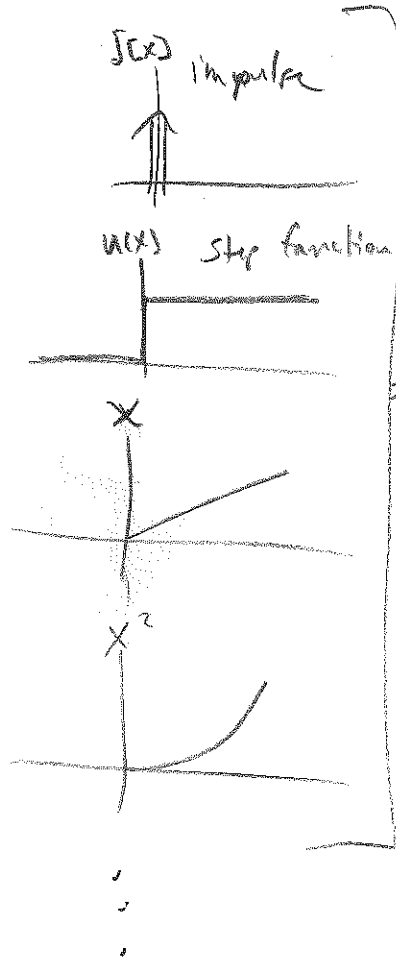
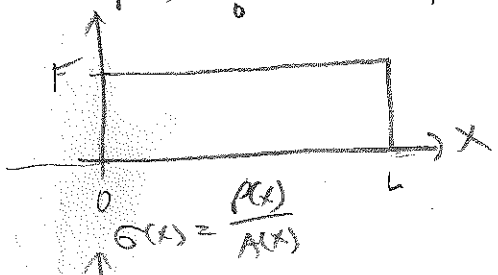
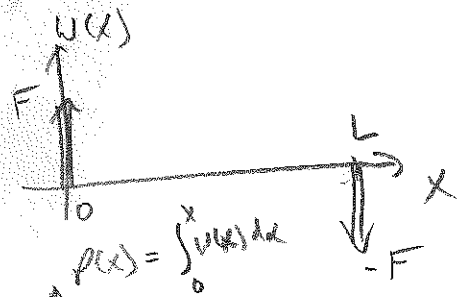
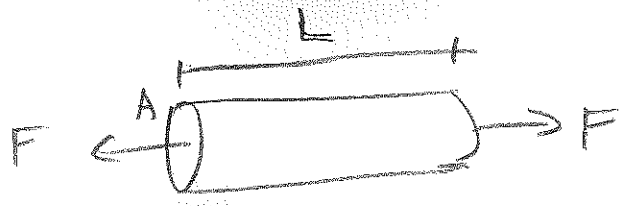


Low order piecewise polynomials

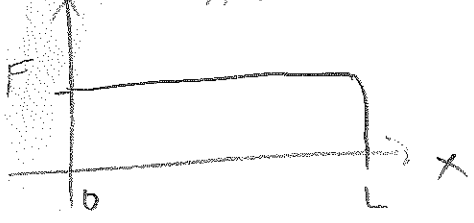


be careful — { curvature of quadratic function?
 transition between integrals of functions?
 integration of 0

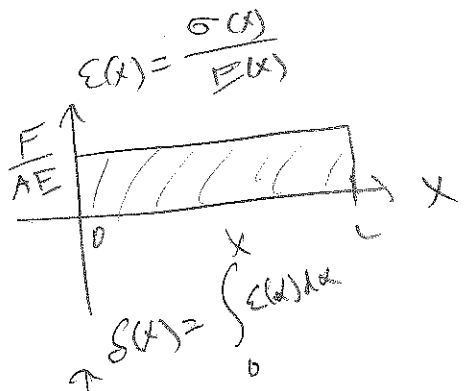
January 21, 2014
 AMED 3400



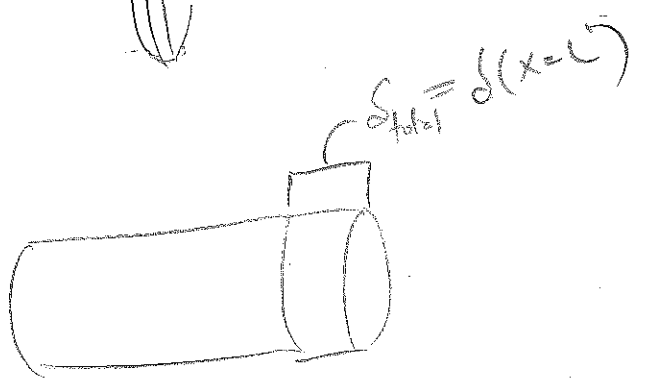
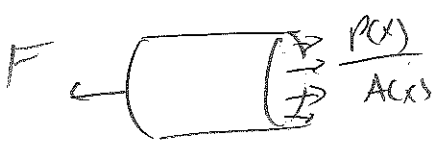
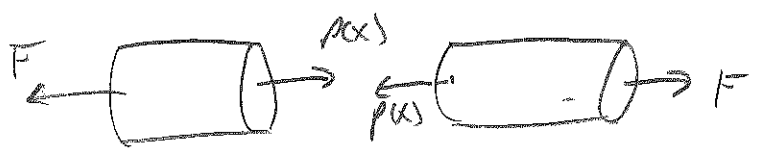
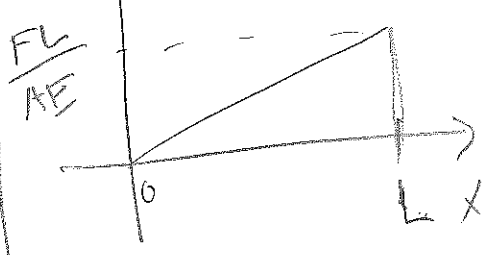
$\sigma(x) = \frac{F}{A}$



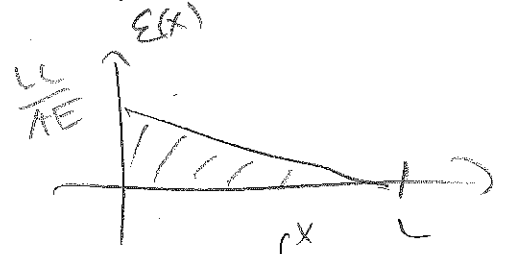
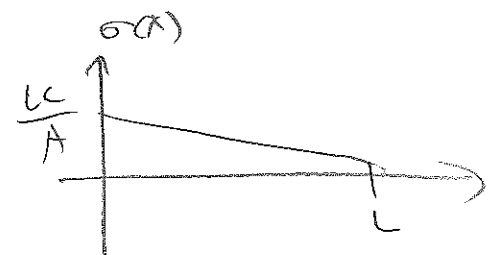
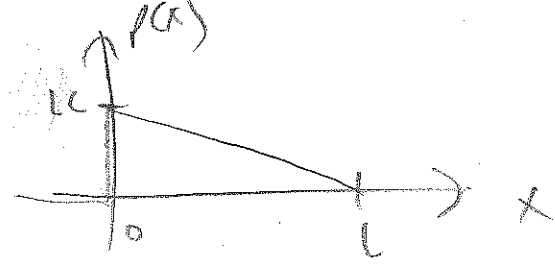
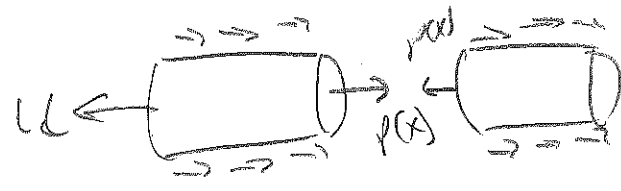
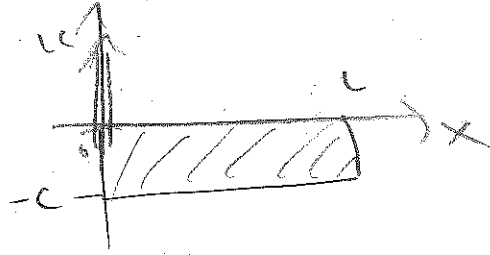
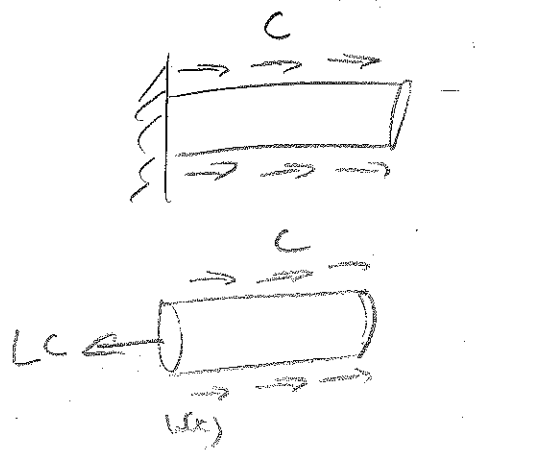
$\epsilon(x) = \frac{P}{AE}$



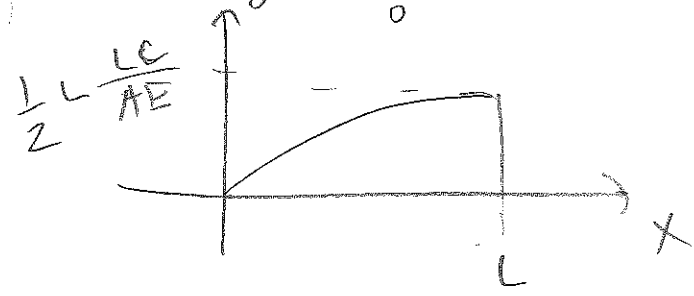
$S_{total} = S(x=L) = \frac{PL}{AE}$



Jan 21, 2017
 BMED 3100



$$\delta(x) = \int_0^x \epsilon(x) dx$$



$$\delta_{total} = \delta(x=L) = \frac{L^2 C}{2AE}$$

check that this makes sense
 interpret it

